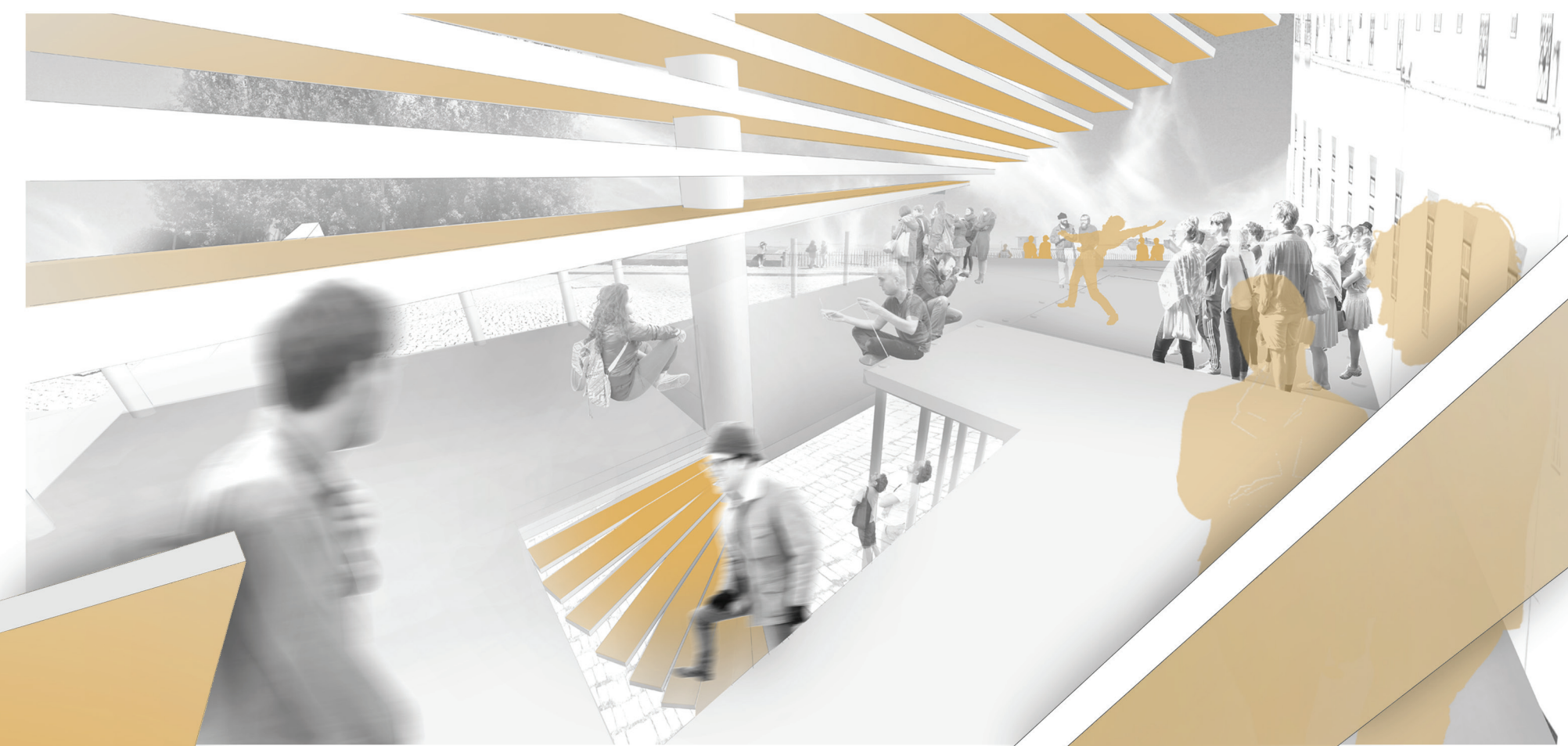
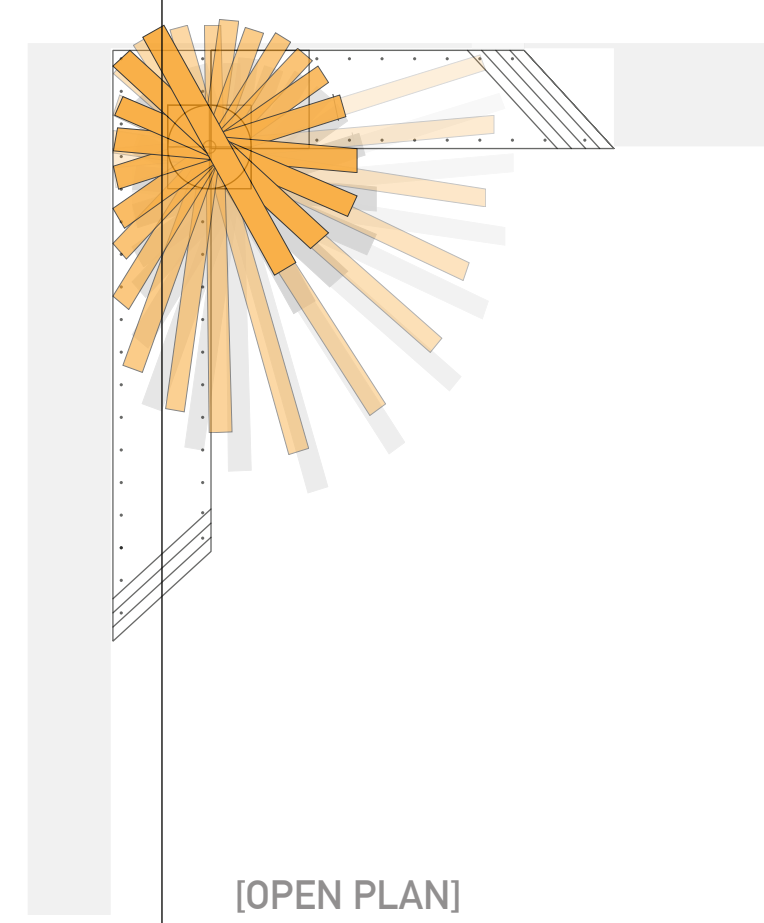
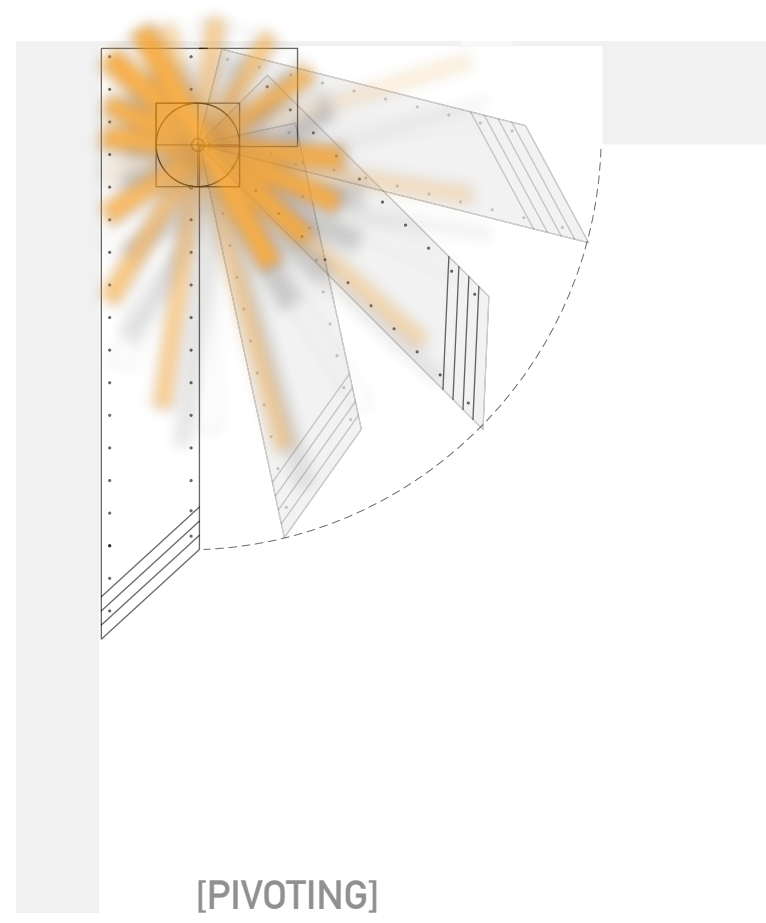
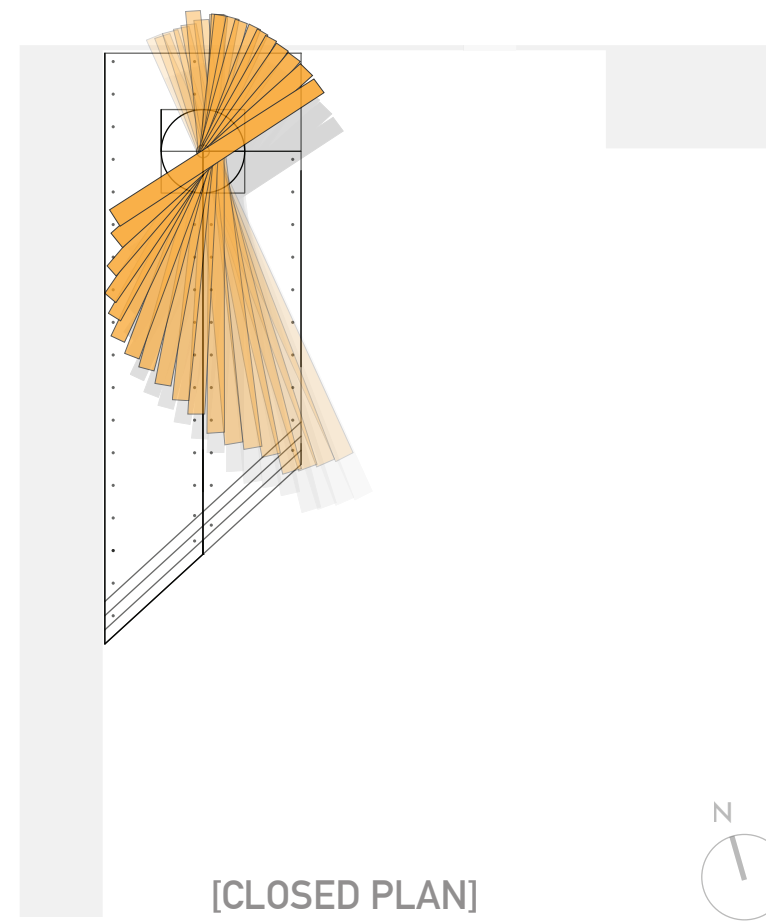


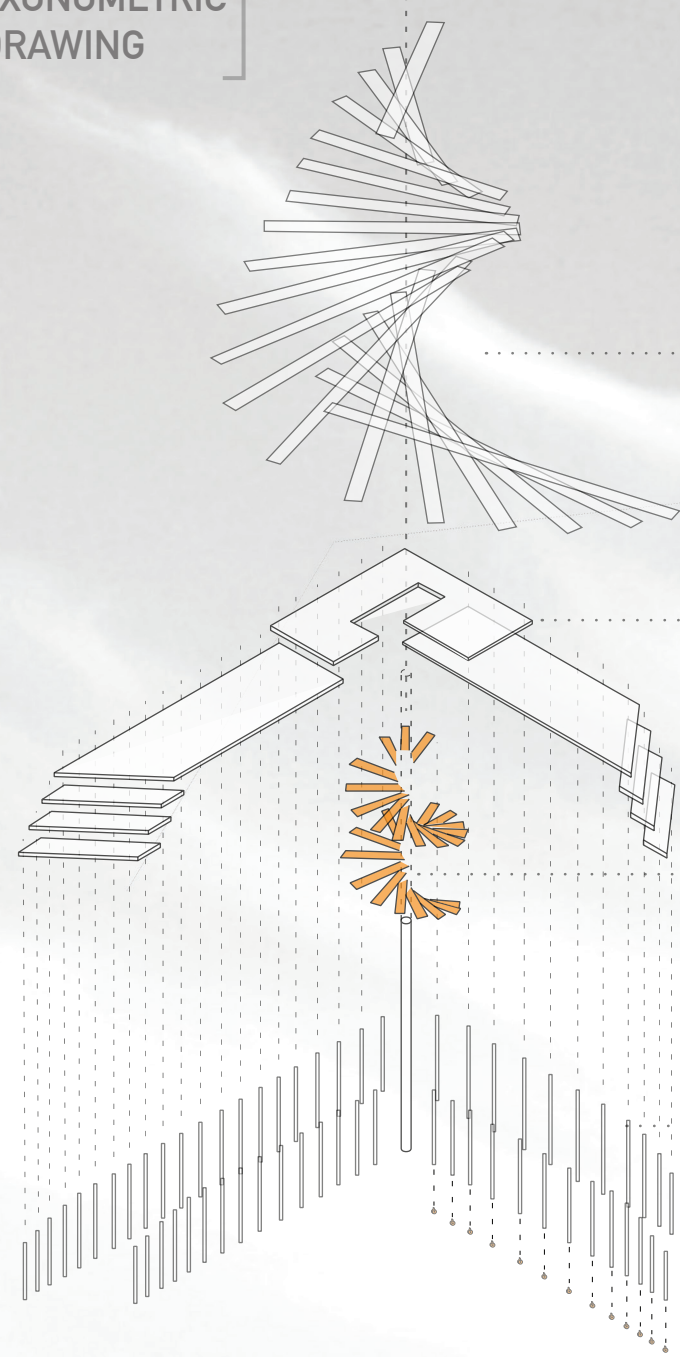
lisbon VFB open room

How can a structure be versatile both in function and form, while responding to the spatial requirements of the inhabitants? Through the development of a minimal structure which can be pivoted on a singular vertical axis, Lisbon's open space is engaged but not intruded upon. Occupying a mere 230m² footprint, the structure acts as a spatial tool when pivoted open - engaging 590m² of opportunity for the community.

The structure allows for a variety of local community events and defines a public plaza with its *lisbon-like canopy*. When the structure is closed, a helix staircase in the axis becomes usable as the stairs pivot with the structure. The ephemeral staircase reveals a more private second floor for events, covered by a sheltered canopy formed by the overhead fins which mimic the pivoting staircase. Angular lips allow for the structure's radius to gently fit within the existing space between heritage buildings, and provide an ocean-oriented viewing terrace with panoramic views to the Lisbon cityscape.



AXONOMETRIC DRAWING



PIVOTING FINS

(Signal of Open Plan to City)
(Upper Room shelter)

FLOOR PLATES

(Lookout to Church and 'El Tajo')
(Allows flush Closed floorplate)

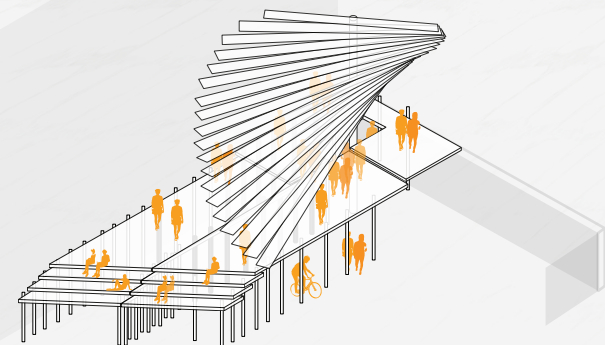
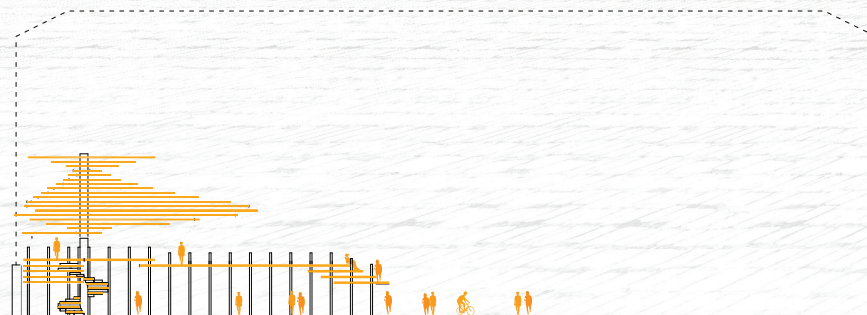
PIVOTING STAIRS

(Become accessible in closed plan)
(Limit upper access when open)

STRUCTURE

(Lightweight for swivelling structure)
(Permeable for site circulation)
(Wheels for ease of pivoting)

[SECTION]



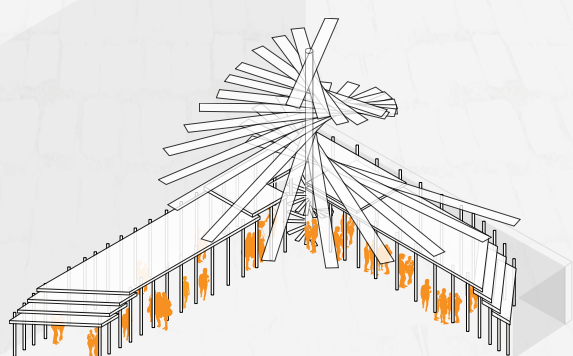
RECEPTIONS

(Private Upper Room with fin cover)
(Lower space remains open)



OPEN PLAZA

(Fins delineate open plaza space)
(Floor plates for shade cover)



MARKETPLACE

(Circulation flows through open plaza)
(Market stalls between posts)